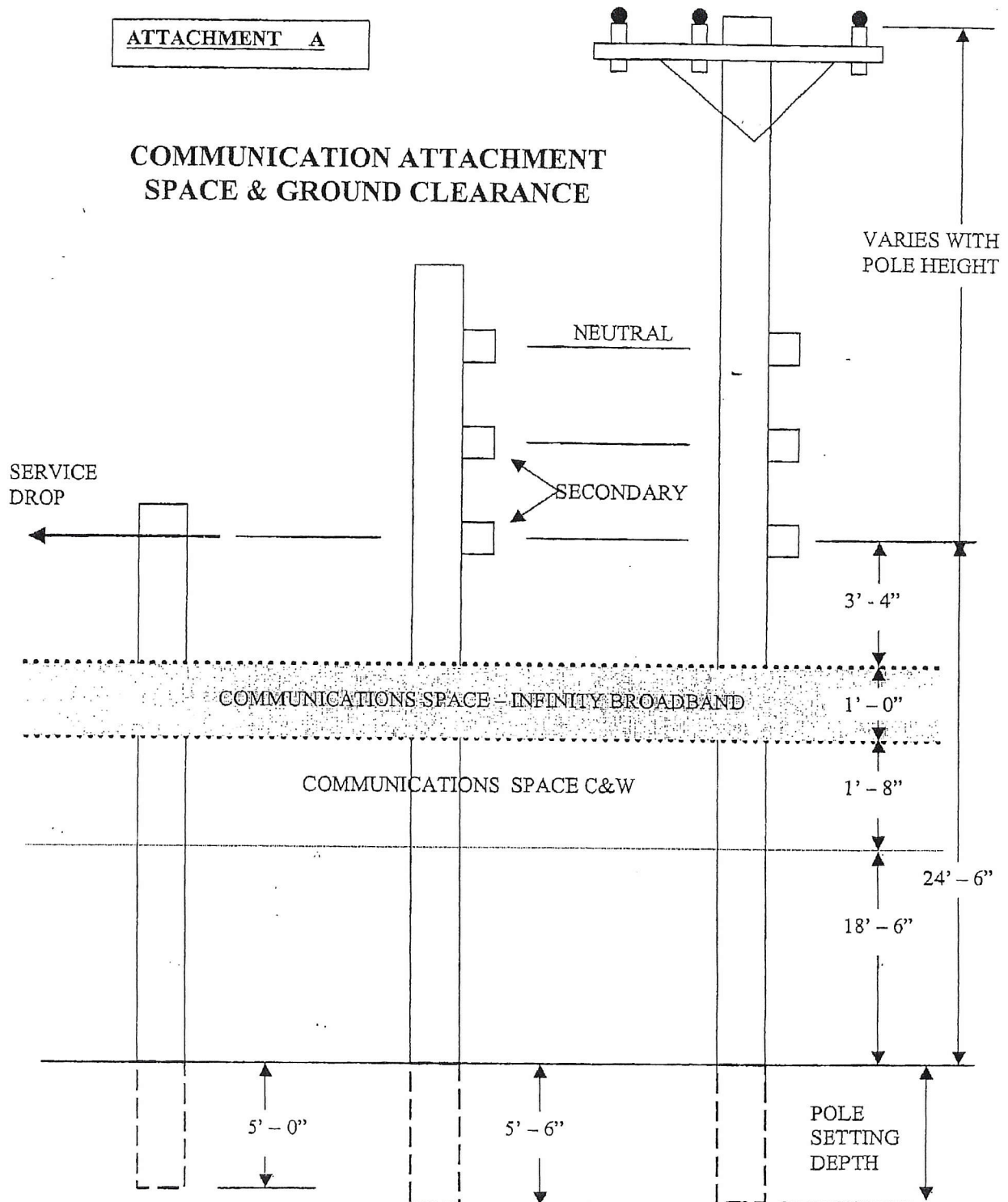


# APPENDIX 1

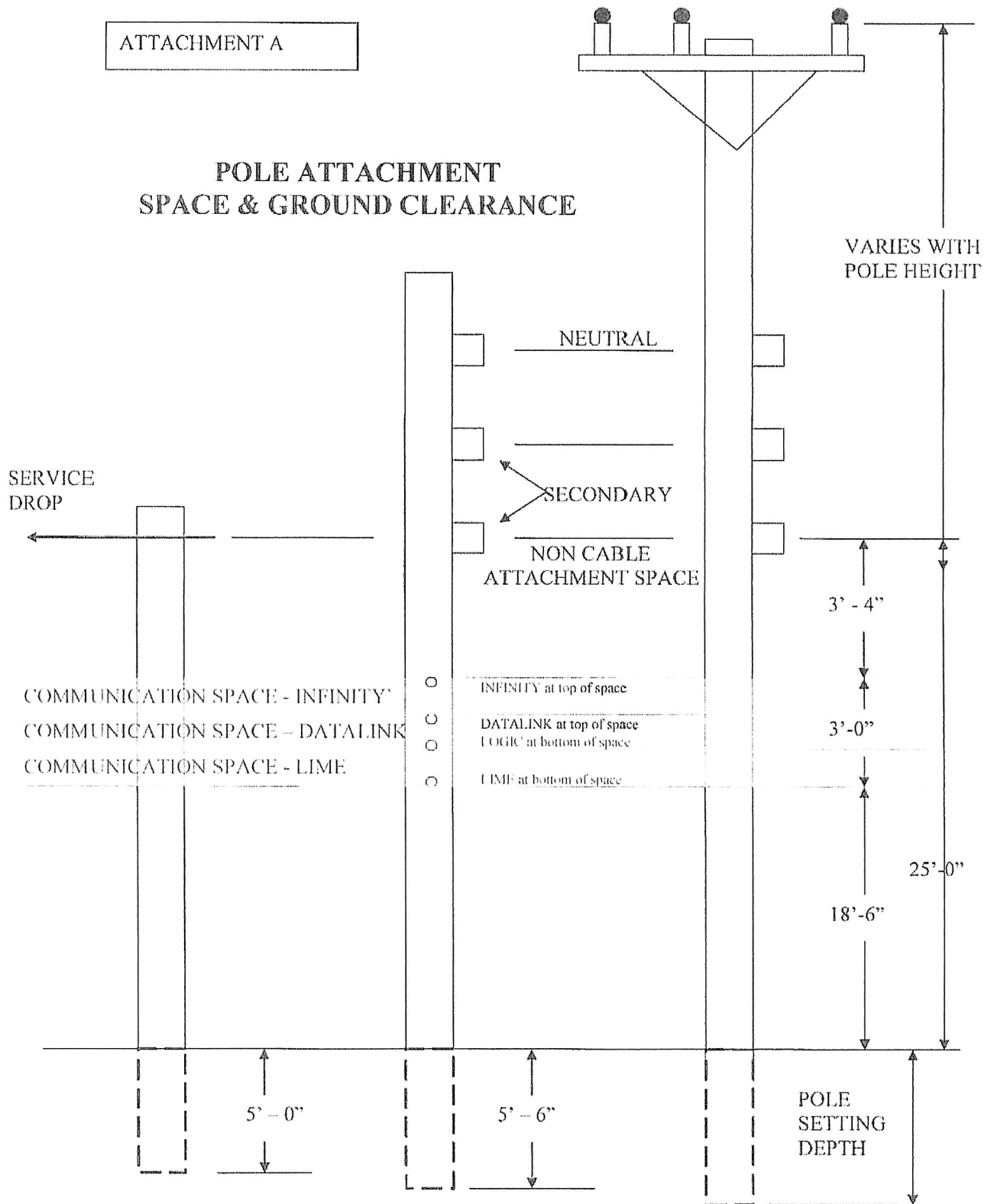
## ATTACHMENT A

### COMMUNICATION ATTACHMENT SPACE & GROUND CLEARANCE



ATTACHMENT A

## POLE ATTACHMENT SPACE & GROUND CLEARANCE



# APPENDIX 2



WF0423188/ 002

CARIBBEAN UTILITIES COMPANY, LTD.

REPRINT

PAGE

1

## WORK REQUEST GENERAL INFORMATION

SCHED START: 04/24/14 SCHED COMPLETION: 09/26/14 9:51:51  
 CT. ADDR.: REF NBR: 0  
 PROJECT: Make Ready Capital W/Os C44L70  
 REQ. DATE: 04/24/14  
 CREW: Line-Unit #094 L94  
 GEN. LOC.: George Town COMP DATE: 04/24/14  
 REQ DEPT: 44-Line Dept-Cap PRIORITY: Medium  
 REQUESTOR: Logic - Liguinea Circle ORIGIN: Internal  
 REQ USER: CINDY AUTH USER: CINDY WRK TYPE: Routine  
 Logic - Liguinea Circle

## DETAIL DESCRIPTION

Make Ready Work to accommodate Attaching Utility's Facilities and to comply with all Applicable Standards by establishing the safety zone, creating the communication space and strengthening the infrastructure, if needed  
 Planner is Richard Jacob

Logic - Liguinea Circle  
 CATEGORY: LINE-OH13KVSafety&Reliblt L0SR  
 TASK: Install Pole IP COMPLETED  
 SCHED START: 06/17/14 SCHED COMPLETION: 06/17/14  
 DEPT: 44-Line Dept-Cap 44

## JOB ORDER INSTRUCTIONS

PLEASE INSTALL 13 ANCHORS AND 8 40FT WOOD POLES IN LIGUINEA CIR. AS SHOWN ON MAP. REUSE EXISTING POLE NUMBERS P#3387 & P#3390, NEW POLE NUMBERS P#44175, P#44176, P#44177, P#44178 P#44179 & P#44180.

ALL APPROVALS GIVEN FROM CUSTOMERS AND OTHER UTILITIES.

JOB ISSUED ON MAY 27, 2014.

START DATE: \_\_\_\_/\_\_\_\_/\_\_\_\_ COMPLETION DATE: \_\_\_\_/\_\_\_\_/\_\_\_\_  
 UNIT OF PRODUCTION: \_\_\_\_\_ QUANTITY: \_\_\_\_\_



WF0423188/ 003

CARIBBEAN UTILITIES COMPANY, LTD.

REPRINT

PAGE

1

## WORK REQUEST GENERAL INFORMATION

SCHED START: 04/24/14 SCHED COMPLETION: 09/26/14 9:51:51  
T. ADDR.: REF NBR: 0  
PROJECT: Make Ready Capital W/Os C44L70  
REQ. DATE: 04/24/14  
GEN. LOC.: George Town COMP DATE: 04/24/14  
REQ DEPT: 44-Line Dept-Cap PRIORITY: Medium  
REQUESTOR: Logic - Liguinea Circle ORIGIN: Internal  
REQ USER: CINDY AUTH USER: CINDY WRK TYPE: Routine  
Logic - Liguinea Circle

## DETAIL DESCRIPTION

Make Ready Work to accommodate Attaching Utility's Facilities and to comply with all Applicable Standards by establishing the safety zone, creating the communication space and strengthening the infrastructure, if needed  
Planner is Richard Jacob

Logic - Liguinea Circle

CATEGORY: LINE-OH13KV Safety &amp; Reliability LOSR

TASK: Install Line IL

SCHED START: 06/04/14 SCHED COMPLETION: 06/04/14

DEPT: 44-Line Dept-Cap 44

## JOB ORDER INSTRUCTIONS

PLEASE REPLACE EXISTING #2 PRIMARY AND NEUTRAL FROM POLE NUMBERS: P#3378 TO P#3383, FROM P#3387 TO P#3390 AND FROM P#3391 TO P#3395.

ATTACH EXISTING LINES TO NEW POLE NUMBERS:

P#44175, P#44176, P#44177, P#44178, P#44179 &amp;

P#44180 AS SHOWN ON THE MAP.

RELOCATE EXISTING TFMRS ON POLES: P#3381, P#3383,

P#3386, P#3388 &amp; P#3392 TO POLES: P#44175,

P#44176, P#36178, P#44179 &amp; P#44180 AS SHOWN ON

MAP.

INSTALL 1 NEW 15KVA ON P#3385 AND 1 NEW 25KVA ON

P#3387 AS SHOWN ON THE MAP.

REPLACE EXISTING SECONDARIES WITH 2/0 TRI-PLEX

BETWEEN POLE NUMBERS: P#30311 TO P#38582, P#3381

TO P#3382, P#3383 TO P#3384, P#3386 TO P#3391,

P#3388a TO P#3390, P#3392 TO P#3393 &amp; P#3394 TO

P#3395 AS SHOWN ON THE MAP.

INSTALL ADDITIONAL DOWN GUYS ON THE FOLLOWING

POLES: P#3378(2), P#30310(2), P#30311(1),

P#38580(1), P#38582(1), P#3380(1), P#3381(2),

P#3382(1), P#3384(1), P#3385(2), P#3386(1),

P#44177(2), P#3390(4), P#3395(2) &amp; P#32365(2)

AS SHOWN ON THE MAP.

JOB ISSUED MAY 27, 2014.

START DATE: \_\_\_\_/\_\_\_\_/\_\_\_\_

COMPLETION DATE: \_\_\_\_/\_\_\_\_/\_\_\_\_

UNIT OF PRODUCTION: \_\_\_\_\_

QUANTITY: \_\_\_\_\_



WF0423188/ 004

CARIBBEAN UTILITIES COMPANY, LTD.

REPRINT

PAGE

1

## WORK REQUEST GENERAL INFORMATION

SCHED START:04/24/14 SCHED COMPLETION:  
XT. ADDR.: REF NBR: 0  
PROJECT: Make Ready Capital W/Os C44L70  
REQ. DATE: 04/24/14 09/26/14 9:51:52  
CREW: Line-Unit #001 U1  
GEN. LOC.: George Town COMP DATE: 04/24/14  
REQ DEPT: 44-Line Dept-Cap PRIORITY: Medium  
REQUESTOR: Logic - Liguinea Circle ORIGIN: Internal  
REQ USER: CINDY AUTH USER:CINDY WRK TYPE:Routine  
Logic - Liguinea Circle

## DETAIL DESCRIPTION

Make Ready Work to accommodate Attaching Utility's  
Facilities and to comply with all Applicable  
Standards by establishing the safety zone,  
creating the communication space and strengthening  
the infrastructure, if needed  
Planner is Richard Jacob

Logic - Liguinea Circle  
CATEGORY: LINE-OH13KVSafety&Reliblt L0SR  
TASK: Raise Weatherheads RW COMPLETED  
SCHED START:07/09/14 SCHED COMPLETION: 07/09/14  
DEPT: 44-Line Dept-Cap 44  
JOB ORDER INSTRUCTIONS  
CDI to raise weatherheads  
Contract signed May 30, 2014

START DATE: \_\_\_\_/\_\_\_\_/\_\_\_\_ COMPLETION DATE: \_\_\_\_/\_\_\_\_/\_\_\_\_  
UNIT OF PRODUCTION: \_\_\_\_\_ QUANTITY: \_\_\_\_\_



WF0423761/ 002

CARIBBEAN UTILITIES COMPANY, LTD.

REPRINT

PAGE

1

## WORK REQUEST GENERAL INFORMATION

SCHED START:05/02/14 SCHED COMPLETION:  
EXT. ADDR.: REF NBR: ITHMAR  
PROJECT: Make Ready Capital W/Os C44L70  
REQ. DATE: 05/02/14 09/26/14 9:55:24  
CREW: Line-Unit #094 L94  
GEN. LOC.: George Town COMP DATE: 05/02/14  
REQ DEPT: 44-Line Dept-Cap PRIORITY: Medium  
REQUESTOR: Infinity - Ithmar Circle ORIGIN: Customer Req-In Person  
REQ USER: CINDY AUTH USER:CINDY WRK TYPE:Routine  
Infinity - Ithmar Circle

## DETAIL DESCRIPTION

Make Ready Work to accommodate Attaching Utility's  
Facilities and to comply with all Applicable  
Standards by establishing the safety zone,  
creating the communication space and strengthening  
the infrastructure, if needed  
Planner is Duane Wood

Infinity - Ithmar Circle  
CATEGORY: LINE-OH13KVSafety&Reliblt LOSR  
TASK: Install Pole IP COMPLETED  
SCHED START:06/03/14 SCHED COMPLETION: 06/03/14  
DEPT: 44-Line Dept-Cap 44

## JOB ORDER INSTRUCTIONS

DIG HOLES, PLANT 1- 40' POLE AND 12- GUY ANCHORS.  
POLE NUMBER IS 44162.  
SEE MAP FOR POLE AND ANCHORS LOCATION.

START DATE: \_\_\_\_/\_\_\_\_/\_\_\_\_ COMPLETION DATE: \_\_\_\_/\_\_\_\_/\_\_\_\_  
UNIT OF PRODUCTION: \_\_\_\_\_ QUANTITY: \_\_\_\_\_



WF0423761/ 003

CARIBBEAN UTILITIES COMPANY, LTD.

REPRINT

PAGE

1

## WORK REQUEST GENERAL INFORMATION

HED START:05/02/14 SCHED COMPLETION:  
T. ADDR.: REF NBR: ITHMAR  
PROJECT: Make Ready Capital W/Os C44L70  
REQ. DATE: 05/02/14 09/26/14 9:55:24  
CREW: Line-Unit #026 U26  
GEN. LOC.: George Town COMP DATE: 05/02/14  
REQ DEPT: 44-Line Dept-Cap PRIORITY: Medium  
REQUESTOR: Infinity - Ithmar Circle ORIGIN: Customer Req-In Person  
REQ USER: CINDY AUTH USER:CINDY WRK TYPE:Routine  
Infinity - Ithmar Circle

## DETAIL DESCRIPTION

Make Ready Work to accommodate Attaching Utility's  
Facilities and to comply with all Applicable  
Standards by establishing the safety zone,  
creating the communication space and strengthening  
the infrastructure, if needed  
Planner is Duane Wood

Infinity - Ithmar Circle

CATEGORY: LINE-OH13KVSAfety&Reliblt L0SR  
TASK: Make Ready Work MRD COMPLETED  
SCHED START:06/09/14 SCHED COMPLETION: 06/09/14  
DEPT: 44-Line Dept-Cap 44

## JOB ORDER INSTRUCTIONS

#1) INSTALL ONE EXTRA SIDE GUY ON POLE #29766 AND  
POLE #36347 FOR NEW COMPANY LINES.  
#2) DISCONNECT AND REMOVE THE BOTTOM PHASE OF OPEN  
SECONDARIES BETWEEN POLE #36347 AND POLE #36361  
AND LEAVE THE OTHER SECONDARY PHASE TO ACT AS A  
GUY FOR TRIPLEX SECONDARY ON POLE #36361.  
#3) ON POLE #36361, CHANGE 1A FRAMING TO A 1B2 AND  
INSTALL 2- SIDE GUYS. (ONE FOR NEW COMPANY LINES)  
#4) FRAME NEW POLE #44162 FOR A 1A AND 2- SE1/2.  
#5) DISCONNECT AND REMOVE OPEN SECONDARIES FROM  
POLE #36361 TO OLD POLE #36351 AND INSTALL 1- SIDE  
GUY FOR NEW COMPANY LINES ON POLE #36350  
INSTALL 4/0 TRIPLEX SECONDARIES TO REPLACE THE  
OPEN SECONDARIES FROM POLE #36361 TO NEW POLE  
#44162, CHANGE THE TRANSFORMER ON POLE #36350 TO  
A 50KVA AND MAKE THE 50KVA FEED THE 4/0 TRIPLEX  
SECONDARIES FROM POLE #36361 TO NEW POLE #44162.  
#6) INSTALL 2/0 TRIPLEX SERVICE FROM TRIPLEX  
SECONDARIES ON POLE #36361 TO POLE #39510 FOR U/G  
SERVICES ON POLE #39510.  
#7) DISCONNECT AND REMOVE OPEN SECONDARIES FROM  
OLD POLE #36351 TO POLE #36353 AND INSTALL 1- SIDE  
GUY ON POLE #36352 FOR NEW COMPANY LINES.  
INSTALL 4/0 TRIPLEX SECONDARIES TO REPLACE THE  
OPEN SECONDARIES FROM NEW POLE #44162 TO POLE  
#36353, CHANGE THE TRANSFORMER ON POLE #36352 TO  
A 50KVA AND MAKE THE 50KVA FEED TRIPLEX SECONDARY  
FROM POLE #44162 TO POLE #36353.  
#8) INSTALL A O/HEAD GUY (G3) FOR POLE #36353 TO  
POLE #36356.  
#9) DISCONNECT AND REMOVE OPEN SECONDARIES FROM  
POLE #36353 TO POLE #36355, REMOVE THE TRANSFORMER  
ON POLE #36354 AND P. #36355, INSTALL 2- SIDE GUYS  
ON P. #36354 AND 1- DOWN GUY ON P. #36355 FOR NEW  
CO. LINES, CHANGE 1A FRAMING ON P.#36354 TO 1B2.  
INSTALL 4/0 TRIPLEX SECONDARIES TO REPLACE THE  
OPEN SECONDARIES FROM POLE #36353 TO POLE #36355,  
INSTALL A 75KVA ON POLE #36354 AND MAKE THE 75KVA  
FEED TRIPLEX SECONDARIES FROM POLE #36353 TO POLE  
#36355. (CONNECT APARTMENT BLOCK #102A AND #20 TO  
FEED FROM NEW 75KVA TRANSFORMER)  
#10) INSTALL 1- DOWN GUY FOR POLE #36356, 1- SIDE  
GUY FOR POLE #36357, 3- SIDE GUYS FOR POLE #36358  
AND 1- DOWN GUY FOR POLE #36359.  
RETENSION PRIMARY AND OPEN SECONDARIES FROM POLE  
#36356 TO POLE #36359. (WIRES ARE LOW)

E MAP FOR POLE LOCATIONS.

NOTE: THERE ARE 10 - U/G SERVICE W/HEADS THAT NEED  
TO BE HEIGHTEN ON ITHMAR CIRCLE.

\*\* Attn: Albert McLean

START DATE: \_\_\_\_/\_\_\_\_/\_\_\_\_

COMPLETION DATE: \_\_\_\_/\_\_\_\_/\_\_\_\_



WF0423761/ 004

CARIBBEAN UTILITIES COMPANY, LTD.

REPRINT

PAGE

1

## WORK REQUEST GENERAL INFORMATION

SCHED START: 05/02/14 SCHED COMPLETION: 09/26/14 9:55:24  
T. ADDR.: REF NBR: ITHMAR  
PROJECT: Make Ready Capital W/Os C44L70  
REQ. DATE: 05/02/14  
CREW: Line-Unit #057 U57A  
GEN. LOC.: George Town COMP DATE: 05/02/14  
REQ DEPT: 44-Line Dept-Cap PRIORITY: Medium  
REQUESTOR: Infinity - Ithmar Circle ORIGIN: Customer Req-In Person  
REQ USER: CINDY AUTH USER: CINDY WRK TYPE: Routine  
Infinity - Ithmar Circle

## DETAIL DESCRIPTION

Make Ready Work to accommodate Attaching Utility's  
Facilities and to comply with all Applicable  
Standards by establishing the safety zone,  
creating the communication space and strengthening  
the infrastructure, if needed  
Planner is Duane Wood

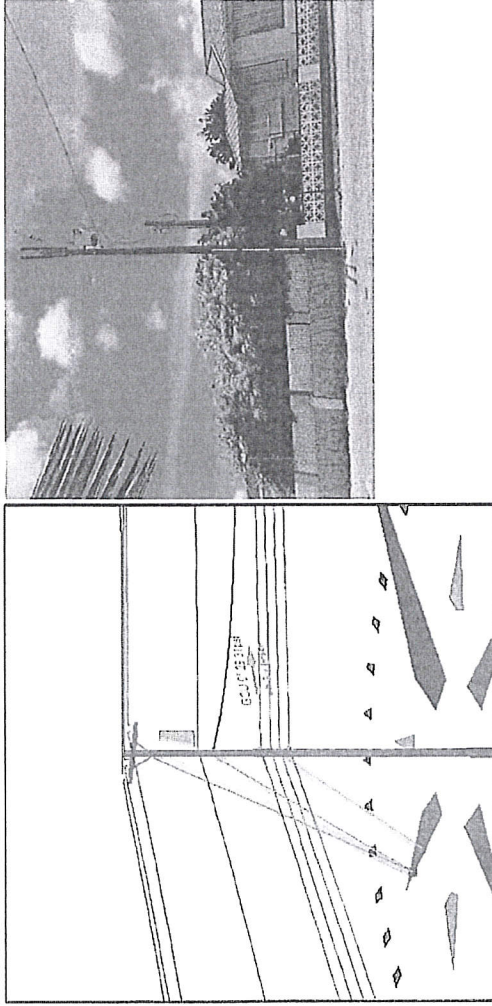
Infinity - Ithmar Circle  
CATEGORY: LINE-OH13KVSafety&Reliblt LOSR  
TASK: Raise Weatherheads RW COMPLETED  
SCHED START: 07/11/14 SCHED COMPLETION: 07/11/14  
DEPT: 44-Line Dept-Cap 44  
JOB ORDER INSTRUCTIONS  
Mega Systems to raise weatherheads on pole #29766,  
36347 & 36361.

START DATE: \_\_\_\_/\_\_\_\_/\_\_\_\_ COMPLETION DATE: \_\_\_\_/\_\_\_\_/\_\_\_\_  
UNIT OF PRODUCTION: \_\_\_\_\_ QUANTITY: \_\_\_\_\_



# O-Calc® Pro Analysis Report

File Name:	43061with4com.pplx	Pole Length / Class:	40 / 3	Code:	NESC	Structure Type:	Angle
Pole Num:	43061 Proposed	Pole Species:	SOUTHERN PINE	NESC Rule:	Rule 250C	Status:	N/A
Aux Data 1	Unset	Setting Depth (ft):	4.46	Construction Grade:	C	Pole Strength Factor:	0.75
Aux Data 2	Unset	G/L Circumference (in):	37.00	Loading District:	Special	Transverse Wind LF:	0.75
Aux Data 3	Unset	G/L Fiber Stress (psi):	8,000	Ice Thickness (in):	0.00	Wire Tension LF:	1.00
Aux Data 4	Unset	Allowable Stress (psi):	6,000	Wind Speed (mph):	107.00	Vertical LF:	1.00
Aux Data 5	Unset	Fiber Stress Ht. Reduction:	No	Wind Pressure (psf)	29.31	Max 250C Wind (mph)	160.80



Pole Capacity Utilization			Height	Wind Angle
Maximum:	62.9%		18.7 ft	0.0°
Groundline:	58.9%		0.0 ft	0.0°
Vertical:	9.5%		27.3 ft	90.0°

Pole Moments			Load Angle	Wind Angle
Max Capac. Util:	24,719 ft-lb		349.3°	0.0°
Groundline:	45,661 ft-lb		14.0°	0.0°

Guy Summary		Guy Tensions		Maximum Guy Tensions	
	Attach Height (ft)	% Allowable Tension	Wind Angle	% Allowable Tension	Wind Angle
Guy 1	33.2	42.0%	0.0°	52.7%	91.2°
Guy 2	26.5	33.8%	0.0°	49.1%	91.2°
Guy 3	19.0	41.6%	0.0°	55.0%	96.9°

Anchor Summary			Lead Length (ft)	Max. % Allow. Capacity
Anchor 1			21.0	88.4%
Anchor 2			16.5	33.0%